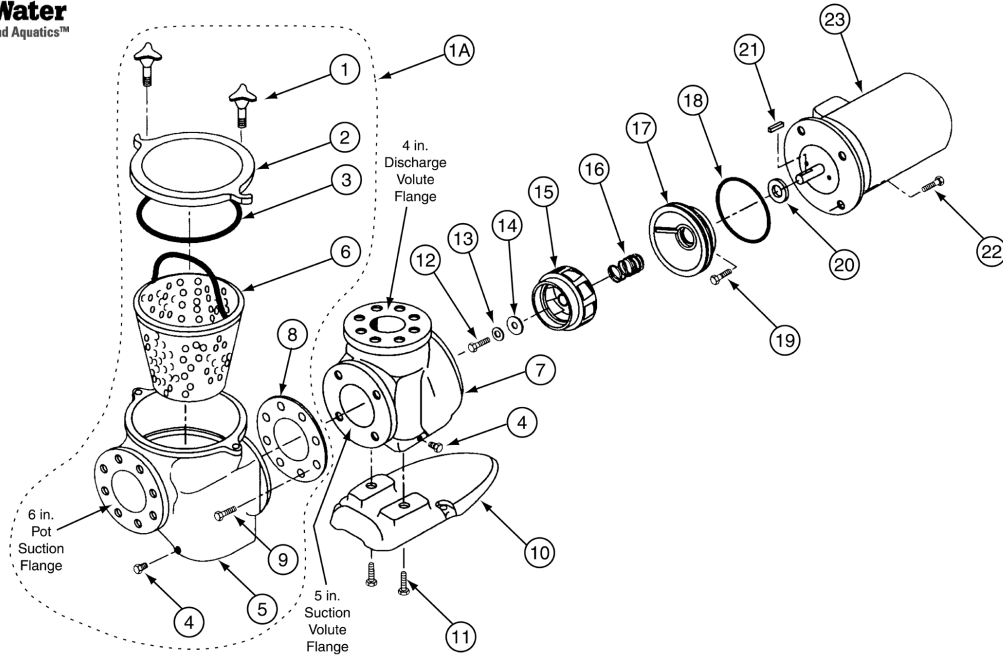


C Series® Pump

Replacement Parts for Commercial High Performance Pumps



Item	Part No.	Ref. No.	Description	US List	Can. List
C SERIES PUMPS					
1	075280	54475280618	Hand nut assembly, bronze, 2 req.	121.20	124.84
1A	072747		C series pot assembly ¹	5497.15	5662.06
2	075275	26075275219	Cover, C16, bronze	879.08	905.45
3	071433	3640525457	O-ring, C-18	8.31	8.56
4	071551	6000002190	Plug pipe, 1/4 in. bronze, 1 req.	4.93	5.08
5	075271	79675271199	Pot mach. bronze	4164.55	4289.49
6	072795	70472795100	Basket, C-29 SS 11 in.	413.58	425.99
7	075273	18075273199	Volute, C-2 bronze	4108.36	4231.61
8	070943	36470943603	Gasket flange, P-135, 5 in.	25.48	26.24
9	071683	1680634104	Screw, 3/4, 10 x 1-3/4 hh. brs. P-12, 4 req.	31.82	32.77
10	075287	82075287632	Foot, C-4 coated	91.55	94.30
11	071688	1680558359	Screw, 5/8, 11 x 1 stl. hh., 2 req.	1.68	1.73
12	071037	1680115104	Impeller, C-35 lock screw	5.65	5.82
13	071048	90871048212	Impeller, washer, C-71	12.79	13.17
14	075713	3642034603	Impeller, washer gasket	1.33	1.37
15	073828	44473328208	Impeller, CH-50/CHK-50/CHKL-50, 5HP, 1PH, 3PH, high hd.	1356.65	1397.35
15	070228	44470228208	Impeller, CM-50/CMK-50/CMKL-50, 5HP, 1PH, 3PH, med. hd.	1356.65	1397.35
15	073829	44473829208	Impeller, CH-75/CHK-75/CHKL-75, 7.5HP, 1PH, 3PH, high hd.	1356.65	1397.35
15	070227	44470227208	Impeller, CM-75/CMK-75/CMKL-75, 7.5HP, 1PH, 3PH, med. hd.	1356.65	1397.35
15	073830	44473830208	Impeller, CH-100/CHK-100/CHKL-100, 10HP, 1PH, 3PH, high hd.	1356.65	1397.35
15	070226	44470226208	Impeller, CM-100/CMK-100/CMKL-100, 10HP, 1PH, 3PH, med. hd.	1356.65	1397.35

Item	Part No.	Ref. No.	Description	US List	Can. List
15	073831	44473831208	Impeller, CHK-150/CHKL-150, 15HP, 3PH, high hd.	1356.65	1397.35
15	070225	44470225208	Impeller, CMK-150/CMKL-150, 15HP, 3PH, med. hd.	1356.65	1397.35
15	073832	44473832208	Impeller, CHK-200/CHKL-200, 20HP, 3PH, high hd.	1356.65	1397.35
16	0717255	71271725753	Seal, C-7, PS-360	43.55	44.86
17	070906	11670906199	Flange, mach., C-52 brass	590.86	608.59
18	071423	3640508457	O-ring, C-70	3.29	3.39
19	071681	1680378104	Screw, 3/8, 16 x 7/8 in. CS hh., 2 req.	1.24	1.28
20	072185	7641043478	Water slinger, C-115	8.77	9.03
21	071046	4720201104	Impeller, key, 3/16 in.	22.22	22.89
22	071687	1680155113	Screw, 1/2, 13 x 1-1/4 stl. hh., 4 req.	5.51	5.68
60 HERTZ MOTORS					
23	3572055		Motor package, 5HP, 1PH, 200/208V	3286.55	3385.15
23	0713665	52571366999	Motor package, 5HP, 1PH, 230V	3286.55	3385.15
23	3572065		Motor package, 5HP, 3PH, 200/208V	2639.58	2718.77
23	0713645	52571364999	Motor package, 5HP, 3PH, 208-220/440	2639.60	2718.79
23	3572075		Motor package, 7-1/2 HP, 1PH, 200/208V	3584.85	3692.40
23	3572045	525357204999	Motor package, 7-1/2 HP, 1PH, 230V	3584.85	3692.40
23	3572085		Motor package, 7-1/2 HP, 3PH, 200/208V	2890.38	2977.09
23	0713655	52571365999	Motor package, 7-1/2 HP, 3PH, 208-220/440V	2890.37	2977.08

C Series® Pump (Cont'd)

Replacement Parts for Commercial Performance Pumps

Item	Part No.	Ref. No.	Description	US List	Can. List
C SERIES PUMPS					
60 HERTZ MOTORS (Cont'd)					
23	357247S		Motor package, 7.5HP, 3PH, 575V	2890.38	2977.09
23	357209S		Motor package, 10HP, 3PH, 200/208V	4157.52	4282.25
23	357249		Motor package, 10HP, 1PH, 230V	CALL	CALL
23	071363S	52571363999	Motor package, 10HP, 3PH, 208-220/440V	4157.52	4282.25
23	357238S		Motor package, 10HP, 3PH, 575V	4157.52	4282.25
23	357210S		Motor, package 15HP, 3PH, 200/208V	4870.46	5016.57
23	071361S	52571361999	Motor package, 15HP, 3PH, 208-220/440V	4870.46	5016.57
23	357245S		Motor package, 15HP, 3PH, 575V	4870.46	5016.57
23	357211S		Motor package, 20HP, 3PH, 200/208V	8009.31	8249.59
23	071362S	52571362999	Motor package, 20HP, 3PH, 208-220/440V	8009.31	8249.59
23	357246S		Motor, package 20HP, 3PH, 575V	8009.31	8249.59
50 HERTZ MOTORS					
23	072737S	52572737999	Motor, 5HP, 3PH, 380/415V	2639.58	2718.77
23	072739S	52572739999	Motor, 7.5HP, 3PH, 380/415V	2890.38	2977.09
23	072740S	52572740999	Motor, 10HP, 3PH, 380/415V	1637.70	1686.83
23	072742S	52572742999	Motor, 15HP, 3PH, 380/415V	4638.55	4777.71
23	072744S	52572744999	Motor, 20HP, 3PH, 380/415V	8009.31	8249.59
Motor subassemblies include items No.12 -21 and 23					
	073260	A073260	Motor, sub assembly, CM-50	5420.99	5583.62
	073262	A073262	Motor, sub assembly, CMK-50 ²	6088.76	6271.42
	073264	A073264	Motor, sub assembly, CH-50	6490.23	6684.94
	073265	A073265	Motor, sub assembly, CHK-50 ²	6244.87	6432.22
	073263	A073263	Motor, sub assembly CMK-75 ²	6250.77	6438.29
	073266	A073266	Motor, sub assembly CHK-75 ²	6411.27	6603.61

Item	Part No.	Ref. No.	Description	US List	Can. List
	073680	A073680	Motor, sub assembly CMK-100 ²	8138.16	8382.30
	073267		Motor, sub assembly CHK-100 ²	6803.06	7007.15
	073261	A073261	Motor, sub assembly CMK-150 ²	8463.32	8717.22
	073268	A073268	Motor, sub assembly CHK-150 ²	8842.36	9107.63
	073269	A073269	Motor, sub assembly CHK-200 ²	12620.54	12999.16
	357910	A357910	Motor, sub assembly CH-75, 1PH, 230V ³	5593.37	5761.17
	357930	A357930	Motor, sub assembly CM-75, 1PH, 200V ³	5593.37	5761.17
	357935	A357935	Motor, sub assembly CH-75, 1PH, 200V ³	5593.37	5761.17
	357250		Motor, sub assembly CH-100, 10HP, 1PH, 230V	8135.79	8379.86
	357251		Motor, sub assembly CM-100, 1PH, 230V	8135.79	8379.86
	014700	A014700	Motor, sub assembly CMKL-50 380/415V ⁴	6030.80	6211.72
	014801	A014801	Motor, sub assembly CHKL-50 380/415V ⁴	6030.80	6211.72
	014701	A014701	Motor, sub assembly CMKL-75 380/415V ⁴	6191.25	6376.99
	014802	A014802	Motor, sub assembly CHKL-75 380/415V ⁴	6191.25	6376.99
	014702	A014702	Motor, sub assembly CMKL-100 ⁴	7949.65	8188.14
	014803	A014803	Motor, sub assembly CHKL-100 ⁴	7949.65	8188.14
	014703	A014703	Motor, sub assembly CMKL-150 ⁴	8758.12	9020.86
	014804	A014804	Motor, sub assembly CHKL-150 ⁴	8758.12	9020.86
	014805	A014805	Motor, sub assembly CHKL-200 ⁴	12500.38	12875.39

¹ Includes: 2 of item No. 1, 1 each of items No. 2 thru No. 6, 1 of item No. 8 and 4 of item No. 9.

² All motor subassemblies are 60 Hertz 220/440V, 3 phase.

³ All motor subassemblies are single phase 60 Hertz.

⁴ All motor subassemblies are 50 Hertz 380/415V, 3 phase.

Notes:

- All bronze C-series parts will retrofit older cast iron models.
- Standard flange not included with pump.
- For all 200/208V applications, use 200/208V motors only.